

Pure Metal Cards®



PRODUCT BROCHURE

Fall/Winter 2024

CONTENTS

MATT BLACK STAINLESS STEEL CARDS

Matt Black Stainless Steel Cards	3
Matt Black Pixel Stainless Steel	4
Matt Black Frosted Stainless Steel Cards	4
Matt Black Prism Stainless Steel Cards	5
Matt Black Contour Stainless Steel Cards	5
Matt Black Velvet Stainless Steel Cards	6
Matt Black Brushed Stainless Steel Cards	6

STAINLESS STEEL CARDS

Standard Stainless Steel Cards	7
Mirror Stainless Steel Cards	8
Silver Prism Stainless Steel Cards	8
Silver Frosted Stainless Steel Cards	9
Contour Stainless Steel Cards	9
Brushed Stainless Steel Cards	10
Gun Metal Grey Stainless Steel Cards	10
Brushed Gun Metal Grey Stainless Steel	11
White Stainless Steel Cards	11
Color/Photo Stainless Steel Card	12
Iridescent Steel Cards	12
Gold Plated Stainless Steel Cards	13
Silver Plated Stainless Steel Cards	13

BRASS (GOLD) CARDS

Standard Brass (Gold) Cards	14
Brass (Gold) Mirror Cards	15
Brass (Gold) Prism Cards	15
Brass (Gold) Frosted Cards	16
Brass (Gold) Contour Cards	16
Brass (Gold) Brushed Cards	17
Brass (Gold) Antique Cards	17
Matt Black Brass Cards	18

COPPER CARDS

Copper Mirror Cards	19
Copper Prism Cards	20
Copper Frosted Cards	20
Matt Black Copper Cards	21
Copper Brushed Cards	21
Copper Contour Cards	22
Matt Black Contour Copper Cards	22

TITANIUM CARDS

Brushed Titanium Cards	23
Matt Black Titanium Cards	24
White Titanium Cards	24

CARBON FIBER CARDS

Gloss Carbon Fiber Cards	25
Matt Carbon Fiber Cards	26
Carbon Fiber Luggage Tags	26

PRECIOUS METAL CARDS

Gold Cards	27
Platinum Cards	28
Silver Cards	28

METAL GIFT CARDS: NIKE	29
METAL CARDS SPECIFICATIONS	30
PERSONALIZING YOUR MEMBERSHIP CARDS	31
METAL GIFT CARDS: THE CULTIVIST	32
METAL NFC/RFID CARDS	33
PURE IDENTITY CARDS & NFC/RFID CARDS	34
METAL BOTTLE OPENERS	35
CUSTOM SHAPED CARDS	36
PRECISION ENGINEERING	36
PACKAGING	37
SHIPPING DETAILS, LEAD TIMES & CONTACT	40



MATT BLACK STAINLESS STEEL CARDS

MATT BLACK STAINLESS STEEL CARDS

One of our most popular card finishes is the matt black stainless steel card. They make their mark for anyone wanting to present their brand as being cutting edge and powerful. They are popular for VIP cards especially when made in a thicker metal. Our cards are made from high-grade stainless steel that will not tarnish over time.



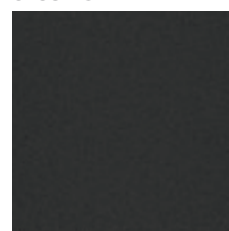
BUSINESS CARDS

QUANTITY	0.3 MM	0.4 / 0.5 / 0.6 / 0.8 MM
200	US\$ 749	US\$ 849
300	US\$ 1,089	US\$ 1,269
400	US\$ 1,349	US\$ 1,679
500	US\$ 1,399	US\$ 1,999
1000	US\$ 2,499	US\$ 3,729

MEMBER CARDS

QUANTITY	0.3 MM	0.4 / 0.5 / 0.6 / 0.8 MM
200	US\$ 829	US\$ 939
300	US\$ 1,199	US\$ 1,399
400	US\$ 1,489	US\$ 1,849
500	US\$ 1,539	US\$ 2,199
1000	US\$ 2,749	US\$ 4,109

CLOSE-UP DETAIL



CARD THICKNESSES



MATT BLACK PIXEL STAINLESS STEEL

Matt black pixel is a new addition to our popular range of matt black stainless steel card finishes. They make their mark for anyone wanting to present their brand as being cutting edged and discreet. They are particularly popular for use as luxury and VIP cards, especially when made in a 0.8mm (0.03") credit card thickness. This pixel finish is a great way to mask fingerprint marks which can be noticeable on metal cards.



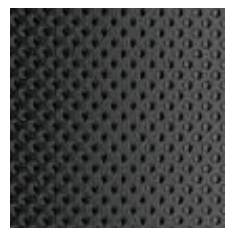
BUSINESS CARDS

QUANTITY	0.3 MM	0.4 / 0.5 / 0.6 / 0.8 MM
200	US\$ 799	US\$ 1,059
300	US\$ 1,059	US\$ 1,479
400	US\$ 1,349	US\$ 1,889
500	US\$ 1,639	US\$ 2,349
1000	US\$ 3,159	US\$ 4,589

MEMBER CARDS

QUANTITY	0.3 MM	0.4 / 0.5 / 0.6 / 0.8 MM
200	US\$ 879	US\$ 1,169
300	US\$ 1,169	US\$ 1,629
400	US\$ 1,489	US\$ 2,079
500	US\$ 1,809	US\$ 2,589
1000	US\$ 3,479	US\$ 5,049

CLOSE-UP DETAIL



CARD THICKNESSES

0.3 MM	_____
0.4 MM	_____
0.5 MM	_____
0.6 MM	_____
0.8 MM	_____

MATT BLACK FROSTED STAINLESS STEEL CARDS

Matt black frosted is an addition to our popular matt black stainless steel card finish. They make their mark for anyone wanting to present their brand as being cutting edged and discreet. They are less likely to show fingerprints and make heavy-handed usage less noticeable. Our cards are made from high-grade stainless steel that will not tarnish over time.



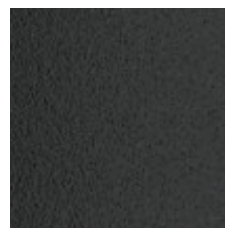
BUSINESS CARDS

QUANTITY	0.3 MM	0.4 / 0.5 / 0.6 / 0.8 MM
200	US\$ 799	US\$ 1,059
300	US\$ 1,059	US\$ 1,479
400	US\$ 1,349	US\$ 1,889
500	US\$ 1,639	US\$ 2,349
1000	US\$ 3,159	US\$ 4,589

MEMBER CARDS

QUANTITY	0.3 MM	0.4 / 0.5 / 0.6 / 0.8 MM
200	US\$ 879	US\$ 1,169
300	US\$ 1,169	US\$ 1,629
400	US\$ 1,489	US\$ 2,079
500	US\$ 1,809	US\$ 2,589
1000	US\$ 3,479	US\$ 5,049

CLOSE-UP DETAIL



CARD THICKNESSES

0.3 MM	_____
0.4 MM	_____
0.5 MM	_____
0.6 MM	_____
0.8 MM	_____

MATT BLACK PRISM STAINLESS STEEL CARDS

Matt black prism stainless steel metal cards presents your brand as being strong, energetic and contemporary. They are less likely to show fingerprints and make heavy-handed usage less noticeable. They make an impression no paper card ever could.



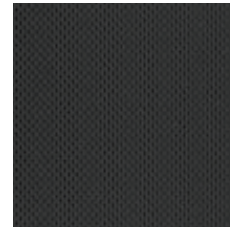
BUSINESS CARDS

QUANTITY	0.3 MM	0.4 / 0.5 / 0.6 / 0.8 MM
200	US\$ 809	US\$ 1,159
300	US\$ 1,129	US\$ 1,589
400	US\$ 1,449	US\$ 2,049
500	US\$ 1,799	US\$ 2,489
1000	US\$ 3,359	US\$ 4,939

MEMBER CARDS

QUANTITY	0.3 MM	0.4 / 0.5 / 0.6 / 0.8 MM
200	US\$ 899	US\$ 1,279
300	US\$ 1,249	US\$ 1,749
400	US\$ 1,599	US\$ 2,259
500	US\$ 1,979	US\$ 2,739
1000	US\$ 3,699	US\$ 5,439

CLOSE-UP DETAIL



CARD THICKNESSES

0.3 MM	_____
0.4 MM	_____
0.5 MM	_____
0.6 MM	_____
0.8 MM	_____

MATT BLACK CONTOUR STAINLESS STEEL CARDS

Matt black contour stainless steel business cards are quite unique and rare. They really make a great first impression on the beholder. They speak of refinement, power and precision.



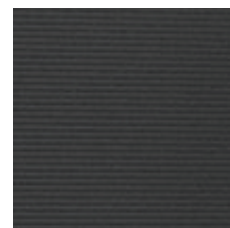
BUSINESS CARDS

QUANTITY	0.3 MM	0.4 / 0.5 / 0.6 / 0.8 MM
200	US\$ 819	US\$ 1,259
300	US\$ 1,149	US\$ 1,849
400	US\$ 1,469	US\$ 2,389
500	US\$ 1,809	US\$ 2,949
1000	US\$ 3,429	US\$ 5,779

MEMBER CARDS

QUANTITY	0.3 MM	0.4 / 0.5 / 0.6 / 0.8 MM
200	US\$ 909	US\$ 1,389
300	US\$ 1,269	US\$ 2,039
400	US\$ 1,619	US\$ 2,629
500	US\$ 1,999	US\$ 3,249
1000	US\$ 3,779	US\$ 6,359

CLOSE-UP DETAIL



CARD THICKNESSES

0.3 MM	_____
0.4 MM	_____
0.5 MM	_____
0.6 MM	_____
0.8 MM	_____

MATT BLACK VELVET STAINLESS STEEL CARDS

Matt black velvet stainless steel business cards are quite unique and rare. They really make a great first impression on the beholder. The card finish really needs to be touched as the finish feels soft rather than metallic when held.



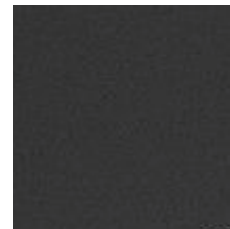
BUSINESS CARDS

QUANTITY	0.3 MM	0.4 / 0.5 / 0.6 / 0.8 MM
200	US\$ 1,119	US\$ 1,339
300	US\$ 1,679	US\$ 2,009
400	US\$ 2,189	US\$ 2,619
500	US\$ 2,689	US\$ 3,209
1000	US\$ 4,809	US\$ 6,009

MEMBER CARDS

QUANTITY	0.3 MM	0.4 / 0.5 / 0.6 / 0.8 MM
200	US\$ 1,239	US\$ 1,479
300	US\$ 1,849	US\$ 2,209
400	US\$ 2,409	US\$ 2,879
500	US\$ 2,959	US\$ 3,529
1000	US\$ 5,289	US\$ 6,609

CLOSE-UP DETAIL



CARD THICKNESSES

0.3 MM	_____
0.4 MM	_____
0.5 MM	_____
0.6 MM	_____
0.8 MM	_____

MATT BLACK BRUSHED STAINLESS STEEL CARDS

Matt black stainless steel business cards with our brushed finish are a recent introduction to our metal card collection. The card is brushed then anodized black to make a distinctive surface. The brushed effect is the same finish as used on our brushed stainless steel business cards.



BUSINESS CARDS

QUANTITY	0.3 MM	0.4 / 0.5 / 0.6 / 0.8 MM
200	US\$ 1,219	US\$ 1,409
300	US\$ 1,769	US\$ 2,059
400	US\$ 2,309	US\$ 2,689
500	US\$ 2,929	US\$ 3,399
1000	US\$ 5,719	US\$ 6,759

MEMBER CARDS

QUANTITY	0.3 MM	0.4 / 0.5 / 0.6 / 0.8 MM
200	US\$ 1,349	US\$ 1,549
300	US\$ 1,949	US\$ 2,269
400	US\$ 2,549	US\$ 2,959
500	US\$ 3,229	US\$ 3,739
1000	US\$ 6,299	US\$ 7,439

CLOSE-UP DETAIL



CARD THICKNESSES

0.3 MM	_____
0.4 MM	_____
0.5 MM	_____
0.6 MM	_____
0.8 MM	_____

Pure Metal Cards
www.puremetalcards.com

PURE

STAINLESS STEEL CARDS

STANDARD STAINLESS STEEL CARDS

Pure Metal Cards stainless steel metal cards present your brand as being strong, energetic and contemporary. They make an impression no paper card ever could. A metal card is a great way to introduce yourself and your business to another person. You can reap great benefits for yourself or your company if you make the right impression with a potential client. Our cards are made from high-grade stainless steel that will not tarnish over time.



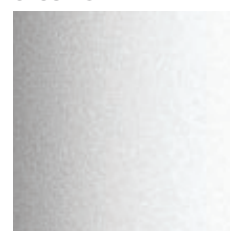
BUSINESS CARDS

QUANTITY	0.3 MM	0.4 / 0.5 / 0.6 / 0.8 MM
200	US\$ 599	US\$ 799
300	US\$ 849	US\$ 1,119
400	US\$ 1,069	US\$ 1,309
500	US\$ 1,159	US\$ 1,399
1000	US\$ 1,999	US\$ 2,659

MEMBER CARDS

QUANTITY	0.3 MM	0.4 / 0.5 / 0.6 / 0.8 MM
200	US\$ 659	US\$ 879
300	US\$ 939	US\$ 1,239
400	US\$ 1,179	US\$ 1,449
500	US\$ 1,279	US\$ 1,539
1000	US\$ 2,199	US\$ 2,929

CLOSE-UP DETAIL



CARD THICKNESSES

0.3 MM	—————
0.4 MM	—————
0.5 MM	—————
0.6 MM	—————
0.8 MM	—————

MIRROR STAINLESS STEEL CARDS

Stainless steel cards with our mirror finish literally reflect distinction and power on their holder. They speak of individuality, achievement and differentiation. Our cards are made from high-grade stainless steel that will not tarnish over time.



BUSINESS CARDS

QUANTITY	0.3 MM	0.4 / 0.5 / 0.6 / 0.8 MM
200	US\$ 849	US\$ 1,189
300	US\$ 1,069	US\$ 1,569
400	US\$ 1,399	US\$ 2,079
500	US\$ 1,689	US\$ 2,559
1000	US\$ 3,139	US\$ 4,999

MEMBER CARDS

QUANTITY	0.3 MM	0.4 / 0.5 / 0.6 / 0.8 MM
200	US\$ 939	US\$ 1,309
300	US\$ 1,179	US\$ 1,729
400	US\$ 1,539	US\$ 2,289
500	US\$ 1,859	US\$ 2,819
1000	US\$ 3,459	US\$ 5,499

CLOSE-UP DETAIL



CARD THICKNESSES

0.3 MM	_____
0.4 MM	_____
0.5 MM	_____
0.6 MM	_____
0.8 MM	_____

SILVER PRISM STAINLESS STEEL CARDS

Silver prism stainless steel metal cards present your brand as being strong, energetic and contemporary. They make an impression no paper card ever could. Our cards are made from high-grade stainless steel that will not tarnish over time.



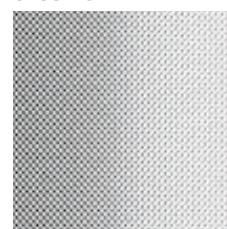
BUSINESS CARDS

QUANTITY	0.3 MM	0.4 / 0.5 / 0.6 / 0.8 MM
200	US\$ 729	US\$ 1,089
300	US\$ 1,009	US\$ 1,539
400	US\$ 1,299	US\$ 2,009
500	US\$ 1,579	US\$ 2,439
1000	US\$ 2,999	US\$ 4,799

MEMBER CARDS

QUANTITY	0.3 MM	0.4 / 0.5 / 0.6 / 0.8 MM
200	US\$ 809	US\$ 1,199
300	US\$ 1,119	US\$ 1,699
400	US\$ 1,429	US\$ 2,219
500	US\$ 1,739	US\$ 2,689
1000	US\$ 3,299	US\$ 5,279

CLOSE-UP DETAIL



CARD THICKNESSES

0.3 MM	_____
0.4 MM	_____
0.5 MM	_____
0.6 MM	_____
0.8 MM	_____

SILVER FROSTED STAINLESS STEEL CARDS

Our silver frosted cards made from stainless steel has a finish that is less reflective than other steel finishes we offer. These distinctive metal cards are popular for membership cards.



BUSINESS CARDS

QUANTITY	0.3 MM	0.4 / 0.5 / 0.6 / 0.8 MM
200	US\$ 729	US\$ 1,089
300	US\$ 1,009	US\$ 1,539
400	US\$ 1,299	US\$ 2,009
500	US\$ 1,579	US\$ 2,439
1000	US\$ 2,999	US\$ 4,799

MEMBER CARDS

QUANTITY	0.3 MM	0.4 / 0.5 / 0.6 / 0.8 MM
200	US\$ 809	US\$ 1,199
300	US\$ 1,119	US\$ 1,699
400	US\$ 1,429	US\$ 2,219
500	US\$ 1,739	US\$ 2,689
1000	US\$ 3,299	US\$ 5,279

CLOSE-UP DETAIL



CARD THICKNESSES

0.3 MM	_____
0.4 MM	_____
0.5 MM	_____
0.6 MM	_____
0.8 MM	_____

STAINLESS STEEL CONTOUR CARDS

Silver contour finish is an elegant addition to our stainless steel card range. These exquisite cards are made from high-grade stainless steel that will not tarnish over time.



BUSINESS CARDS

QUANTITY	0.3 MM	0.4 / 0.5 / 0.6 / 0.8 MM
200	US\$ 829	US\$ 1,149
300	US\$ 1,029	US\$ 1,499
400	US\$ 1,359	US\$ 1,899
500	US\$ 1,619	US\$ 2,199
1000	US\$ 2,899	US\$ 4,049

MEMBER CARDS

QUANTITY	0.3 MM	0.4 / 0.5 / 0.6 / 0.8 MM
200	US\$ 919	US\$ 1,269
300	US\$ 1,139	US\$ 1,649
400	US\$ 1,499	US\$ 2,089
500	US\$ 1,789	US\$ 2,419
1000	US\$ 3,189	US\$ 4,459

CLOSE-UP DETAIL



CARD THICKNESSES

0.3 MM	_____
0.4 MM	_____
0.5 MM	_____
0.6 MM	_____
0.8 MM	_____

BRUSHED STAINLESS STEEL CARDS

Brushed stainless steel cards reflect distinction and power on their holder. They speak of refinement, control and precision. Our cards are made from high-grade stainless steel that will not tarnish over time.



BUSINESS CARDS

QUANTITY	0.3 MM	0.4 / 0.5 / 0.6 / 0.8 MM
200	US\$ 829	US\$ 1,169
300	US\$ 1,059	US\$ 1,559
400	US\$ 1,379	US\$ 2,049
500	US\$ 1,689	US\$ 2,519
1000	US\$ 3,139	US\$ 4,959

MEMBER CARDS

QUANTITY	0.3 MM	0.4 / 0.5 / 0.6 / 0.8 MM
200	US\$ 919	US\$ 1,289
300	US\$ 1,169	US\$ 1,719
400	US\$ 1,519	US\$ 2,259
500	US\$ 1,859	US\$ 2,779
1000	US\$ 3,459	US\$ 5,459

CLOSE-UP DETAIL



CARD THICKNESSES

0.3 MM	_____
0.4 MM	_____
0.5 MM	_____
0.6 MM	_____
0.8 MM	_____

GUN METAL GREY STAINLESS STEEL

The gun metal gray stainless steel finish is slightly darker than the standard finish. The card is anodized to 70% black to make a distinctive gun like color surface.



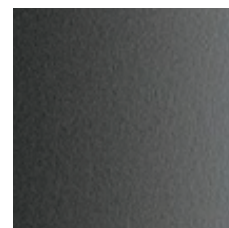
BUSINESS CARDS

QUANTITY	0.3 MM	0.4 / 0.5 / 0.6 / 0.8 MM
200	US\$ 809	US\$ 1,129
300	US\$ 1,069	US\$ 1,549
400	US\$ 1,379	US\$ 2,039
500	US\$ 1,669	US\$ 2,459
1000	US\$ 3,369	US\$ 4,849

MEMBER CARDS

QUANTITY	0.3 MM	0.4 / 0.5 / 0.6 / 0.8 MM
200	US\$ 889	US\$ 1,249
300	US\$ 1,179	US\$ 1,709
400	US\$ 1,519	US\$ 2,249
500	US\$ 1,839	US\$ 2,709
1000	US\$ 3,709	US\$ 5,339

CLOSE-UP DETAIL



CARD THICKNESSES

0.3 MM	_____
0.4 MM	_____
0.5 MM	_____
0.6 MM	_____
0.8 MM	_____

BRUSHED GUN METAL GREY STAINLESS STEEL

In addition to our brushed and matt black brushed stainless steel business cards we offer a gun metal gray brushed finish. The card is brushed then anodized to 70% black to make another stand out and distinctive surface. The brushed effect is the same finish as used on our brushed stainless steel business cards.



BUSINESS CARDS

QUANTITY	0.3 MM	0.4 / 0.5 / 0.6 / 0.8 MM
200	US\$ 849	US\$ 1,189
300	US\$ 1,089	US\$ 1,619
400	US\$ 1,429	US\$ 2,099
500	US\$ 1,699	US\$ 2,599
1000	US\$ 3,199	US\$ 5,049

MEMBER CARDS

QUANTITY	0.3 MM	0.4 / 0.5 / 0.6 / 0.8 MM
200	US\$ 939	US\$ 1,309
300	US\$ 1,199	US\$ 1,789
400	US\$ 1,579	US\$ 2,309
500	US\$ 1,869	US\$ 2,859
1000	US\$ 3,519	US\$ 5,559

CLOSE-UP DETAIL



CARD THICKNESSES

0.3 MM	_____
0.4 MM	_____
0.5 MM	_____
0.6 MM	_____
0.8 MM	_____

WHITE STAINLESS STEEL CARDS

Our white stainless steel business cards are for those who love the white color on cards but want to upgrade to something rather special for their business card or membership card. These cards can also be made in brass or copper too.



BUSINESS CARDS

QUANTITY	0.3 MM	0.4 / 0.5 / 0.6 / 0.8 MM
200	US\$ 649	US\$ 879
300	US\$ 899	US\$ 1,239
400	US\$ 1,149	US\$ 1,499
500	US\$ 1,299	US\$ 1,809
1000	US\$ 2,199	US\$ 3,199

MEMBER CARDS

QUANTITY	0.3 MM	0.4 / 0.5 / 0.6 / 0.8 MM
200	US\$ 719	US\$ 969
300	US\$ 989	US\$ 1,369
400	US\$ 1,269	US\$ 1,649
500	US\$ 1,429	US\$ 1,999
1000	US\$ 2,419	US\$ 3,519

CLOSE-UP DETAIL



CARD THICKNESSES

0.3 MM	_____
0.4 MM	_____
0.5 MM	_____
0.6 MM	_____
0.8 MM	_____

STANDARD STAINLESS STEEL COLOR/PHOTO CARD

Pure Metal Cards stainless color photo card is a new way to present you or your brand with dynamic colors. They make an impression no paper business card ever could. Our color photograph stainless steel business cards are truly unique in the market. They offer the ability to show any photograph on a metal card, either using a partial color design covering of the card surface or the entire card.



BUSINESS CARDS

QUANTITY	0.3 MM	0.4 / 0.5 / 0.6 / 0.8 MM
200	US\$ 899	US\$ 1,109
300	US\$ 1,319	US\$ 1,639
400	US\$ 1,729	US\$ 2,109
500	US\$ 2,079	US\$ 2,599
1000	US\$ 3,699	US\$ 4,999

MEMBER CARDS

QUANTITY	0.3 MM	0.4 / 0.5 / 0.6 / 0.8 MM
200	US\$ 989	US\$ 1,219
300	US\$ 1,459	US\$ 1,809
400	US\$ 1,899	US\$ 2,319
500	US\$ 2,289	US\$ 2,859
1000	US\$ 4,069	US\$ 5,499

CLOSE-UP DETAIL



CARD THICKNESSES

0.3 MM	_____
0.4 MM	_____
0.5 MM	_____
0.6 MM	_____
0.8 MM	_____

IRIDESCENT STEEL CARDS

Iridescence is the phenomenon of certain surfaces that appear to gradually change colour as the angle of view or the angle of illumination changes. Examples of iridescence include soap bubbles, butterfly wings and now metal cards. Our iridescent metal business cards are simply unique.



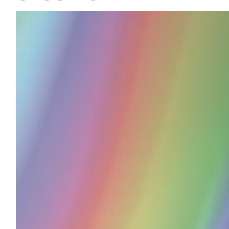
BUSINESS CARDS

QUANTITY	0.3 MM	0.4 / 0.5 / 0.6 / 0.8 MM
200	US\$ 949	US\$ 1,139
300	US\$ 1,399	US\$ 1,699
400	US\$ 1,829	US\$ 2,199
500	US\$ 2,149	US\$ 2,699
1000	US\$ 3,779	US\$ 5,039

MEMBER CARDS

QUANTITY	0.3 MM	0.4 / 0.5 / 0.6 / 0.8 MM
200	US\$ 1,049	US\$ 1,259
300	US\$ 1,539	US\$ 1,869
400	US\$ 2,019	US\$ 2,419
500	US\$ 2,369	US\$ 2,969
1000	US\$ 4,159	US\$ 5,549

CLOSE-UP DETAIL



CARD THICKNESSES

0.3 MM	_____
0.4 MM	_____
0.5 MM	_____
0.6 MM	_____
0.8 MM	_____

GOLD PLATED STAINLESS STEEL CARDS

Handing out a gold plated business card is an introductory statement like no other. Whatever the circumstances, and whomever the individual you're presenting yourself to, a gold business card is sure to make a mark. These stainless steel cards are plated with a thin (0.003 microns), almost microscopic coating of gold. Our cards are made from high-grade stainless steel that will not tarnish over time.



BUSINESS CARDS

QUANTITY	0.3 MM	0.4 / 0.5 / 0.6 / 0.8 MM
200	US\$ 1,669	US\$ 1,999
300	US\$ 2,349	US\$ 2,829
400	US\$ 3,059	US\$ 3,699
500	US\$ 3,769	US\$ 4,539
1000	US\$ 7,409	US\$ 8,699

MEMBER CARDS

QUANTITY	0.3 MM	0.4 / 0.5 / 0.6 / 0.8 MM
200	US\$ 1,839	US\$ 2,199
300	US\$ 2,589	US\$ 3,119
400	US\$ 3,369	US\$ 4,069
500	US\$ 4,149	US\$ 4,999
1000	US\$ 8,159	US\$ 9,569

CLOSE-UP DETAIL



CARD THICKNESSES

0.3 MM	_____
0.4 MM	_____
0.5 MM	_____
0.6 MM	_____
0.8 MM	_____

SILVER PLATED STAINLESS STEEL CARDS

Silver business cards are as much a statement as they are an introduction. The qualities of silver are unmistakable. When this fine metal is crafted into business cards and membership cards it immediately illuminates the bearer in a special light. These stainless steel cards are plated with a thin (0.003 microns), almost microscopic coating of silver. Our cards are made from high-grade stainless steel that will not tarnish over time.



BUSINESS CARDS

QUANTITY	0.3 MM	0.4 / 0.5 / 0.6 / 0.8 MM
200	US\$ 1,119	US\$ 1,499
300	US\$ 1,489	US\$ 2,049
400	US\$ 1,879	US\$ 2,659
500	US\$ 2,299	US\$ 3,229
1000	US\$ 3,549	US\$ 5,409

MEMBER CARDS

QUANTITY	0.3 MM	0.4 / 0.5 / 0.6 / 0.8 MM
200	US\$ 1,239	US\$ 1,649
300	US\$ 1,639	US\$ 2,259
400	US\$ 2,069	US\$ 2,929
500	US\$ 2,529	US\$ 3,559
1000	US\$ 3,909	US\$ 5,959

CLOSE-UP DETAIL



CARD THICKNESSES

0.3 MM	_____
0.4 MM	_____
0.5 MM	_____
0.6 MM	_____
0.8 MM	_____



BRASS (GOLD) CARDS

STANDARD BRASS (GOLD) CARDS

Business cards cut or etched in brass are a favorite of ours, combining the natural old world appeal of the metal, with the contemporary values the machining technology represents. They have an appeal that is unique and the gold finish makes these cards unforgettable.

On the standard brass finish fingerprints may be more noticeable. We have developed other finishes to mask these marks on the following pages.



BUSINESS CARDS

QUANTITY	0.3 MM	0.4 / 0.5 / 0.6 / 0.8 MM
200	US\$ 609	US\$ 689
300	US\$ 799	US\$ 1,159
400	US\$ 1,039	US\$ 1,519
500	US\$ 1,199	US\$ 1,879
1000	US\$ 2,049	US\$ 3,279

MEMBER CARDS

QUANTITY	0.3 MM	0.4 / 0.5 / 0.6 / 0.8 MM
200	US\$ 679	US\$ 959
300	US\$ 879	US\$ 1,279
400	US\$ 1,149	US\$ 1,679
500	US\$ 1,319	US\$ 2,069
1000	US\$ 2,259	US\$ 3,609

CLOSE-UP DETAIL



CARD THICKNESSES

0.3 MM	_____
0.4 MM	_____
0.5 MM	_____
0.6 MM	_____
0.8 MM	_____

BRASS (GOLD) MIRROR CARDS

Choosing brass for your business cards immediately associates you with the refinement of more cultured times. Our cards are made from high-grade brass that will not tarnish over time. While brass ages and oxidizes naturally our cards are treated to maintain their color for around ten years.



BUSINESS CARDS

QUANTITY	0.3 MM	0.4 / 0.5 / 0.6 / 0.8 MM
200	US\$ 799	US\$ 1,049
300	US\$ 1,029	US\$ 1,559
400	US\$ 1,339	US\$ 2,049
500	US\$ 1,539	US\$ 2,509
1000	US\$ 2,769	US\$ 4,589

MEMBER CARDS

QUANTITY	0.3 MM	0.4 / 0.5 / 0.6 / 0.8 MM
200	US\$ 939	US\$ 1,159
300	US\$ 1,239	US\$ 1,719
400	US\$ 1,569	US\$ 2,259
500	US\$ 1,839	US\$ 2,759
1000	US\$ 3,139	US\$ 5,049

CLOSE-UP DETAIL



CARD THICKNESSES

0.3 MM	_____
0.4 MM	_____
0.5 MM	_____
0.6 MM	_____
0.8 MM	_____

BRASS (GOLD) PRISM CARDS

Cards cut or etched in brass are a favorite of ours, combining the natural old-world appeal of the metal, with the contemporary values the machining technology represents. Choosing brass for your business cards or membership cards immediately associates you or your brand with the refinement of more cultured times. Our cards are made from high-grade brass that will not tarnish over time. While brass ages and oxidizes naturally our cards are treated to maintain their color for around ten years.



BUSINESS CARDS

QUANTITY	0.3 MM	0.4 / 0.5 / 0.6 / 0.8 MM
200	US\$ 649	US\$ 899
300	US\$ 869	US\$ 1,189
400	US\$ 1,129	US\$ 1,549
500	US\$ 1,349	US\$ 1,899
1000	US\$ 2,339	US\$ 3,409

MEMBER CARDS

QUANTITY	0.3 MM	0.4 / 0.5 / 0.6 / 0.8 MM
200	US\$ 719	US\$ 989
300	US\$ 959	US\$ 1,309
400	US\$ 1,249	US\$ 1,709
500	US\$ 1,489	US\$ 2,089
1000	US\$ 2,579	US\$ 3,759

CLOSE-UP DETAIL



CARD THICKNESSES

0.3 MM	_____
0.4 MM	_____
0.5 MM	_____
0.6 MM	_____
0.8 MM	_____

BRASS (GOLD) FROSTED CARDS

These brass cards have a unique finish to give them an icy or frosted effect. Our cards are made from high-grade brass that will not tarnish over time. While brass ages and oxidizes naturally our cards are treated to maintain their color for around ten years. Although our cards are treated and resilient, they may receive scratches with frequent use. Our frosted brass cards are less likely to show fingerprints and make heavy-handed usage less noticeable.



BUSINESS CARDS

QUANTITY	0.3 MM	0.4 / 0.5 / 0.6 / 0.8 MM
200	US\$ 649	US\$ 899
300	US\$ 869	US\$ 1,189
400	US\$ 1,129	US\$ 1,549
500	US\$ 1,349	US\$ 1,899
1000	US\$ 2,339	US\$ 3,409

MEMBER CARDS

QUANTITY	0.3 MM	0.4 / 0.5 / 0.6 / 0.8 MM
200	US\$ 719	US\$ 989
300	US\$ 959	US\$ 1,309
400	US\$ 1,249	US\$ 1,709
500	US\$ 1,489	US\$ 2,089
1000	US\$ 2,579	US\$ 3,759

CLOSE-UP DETAIL



CARD THICKNESSES

0.3 MM	_____
0.4 MM	_____
0.5 MM	_____
0.6 MM	_____
0.8 MM	_____

BRASS (GOLD) CONTOUR CARDS

Contoured finish brass cards are ideal for those seeking a refined texture to their unique metal cards. The contour finish is created with microscopic grooves etched into each side of your card. Our cards are made from genuine brass.



BUSINESS CARDS

QUANTITY	0.3 MM	0.4 / 0.5 / 0.6 / 0.8 MM
200	US\$ 769	US\$ 1,019
300	US\$ 1,029	US\$ 1,319
400	US\$ 1,339	US\$ 1,739
500	US\$ 1,559	US\$ 2,159
1000	US\$ 2,539	US\$ 3,879

MEMBER CARDS

QUANTITY	0.3 MM	0.4 / 0.5 / 0.6 / 0.8 MM
200	US\$ 849	US\$ 1,129
300	US\$ 1,139	US\$ 1,459
400	US\$ 1,479	US\$ 1,919
500	US\$ 1,749	US\$ 2,379
1000	US\$ 2,999	US\$ 4,269

CLOSE-UP DETAIL



CARD THICKNESSES

0.3 MM	_____
0.4 MM	_____
0.5 MM	_____
0.6 MM	_____
0.8 MM	_____

BRASS (GOLD) BRUSHED CARDS

Brushed brass cards reflect distinction and power on their holder. They speak of refinement, control and precision. Our cards are made from high-grade brass that will not tarnish over time. While brass ages and oxidizes naturally our cards are treated to maintain their color for around ten years.



BUSINESS CARDS

QUANTITY	0.3 MM	0.4 / 0.5 / 0.6 / 0.8 MM
200	US\$ 849	US\$ 1,179
300	US\$ 1,029	US\$ 1,559
400	US\$ 1,339	US\$ 2,049
500	US\$ 1,609	US\$ 2,509
1000	US\$ 2,999	US\$ 4,589

MEMBER CARDS

QUANTITY	0.3 MM	0.4 / 0.5 / 0.6 / 0.8 MM
200	US\$ 939	US\$ 1,299
300	US\$ 1,139	US\$ 1,719
400	US\$ 1,479	US\$ 2,259
500	US\$ 1,769	US\$ 2,769
1000	US\$ 3,299	US\$ 5,049

CLOSE-UP DETAIL



CARD THICKNESSES

0.3 MM	_____
0.4 MM	_____
0.5 MM	_____
0.6 MM	_____
0.8 MM	_____

BRASS (GOLD) ANTIQUE CARDS

Our antique brass cards have a finish to give them an aged effect. They are a treasure to behold. Our cards are made from high-grade brass that will not tarnish over time. While brass ages and oxidizes naturally our cards are treated to maintain their color for around ten years.



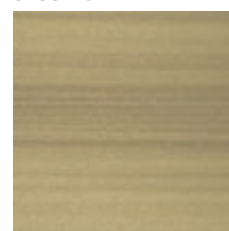
BUSINESS CARDS

QUANTITY	0.3 MM	0.4 / 0.5 / 0.6 / 0.8 MM
200	US\$ 869	US\$ 1,279
300	US\$ 1,249	US\$ 1,779
400	US\$ 1,629	US\$ 2,349
500	US\$ 1,949	US\$ 2,909
1000	US\$ 3,599	US\$ 5,409

MEMBER CARDS

QUANTITY	0.3 MM	0.4 / 0.5 / 0.6 / 0.8 MM
200	US\$ 959	US\$ 1,409
300	US\$ 1,379	US\$ 1,959
400	US\$ 1,799	US\$ 2,589
500	US\$ 2,149	US\$ 3,199
1000	US\$ 3,959	US\$ 5,959

CLOSE-UP DETAIL



CARD THICKNESSES

0.3 MM	_____
0.4 MM	_____
0.5 MM	_____
0.6 MM	_____
0.8 MM	_____

MATT BLACK BRASS CARDS

The most popular finish for our metal cards is matt black. The matt black brass card with gold detailing enables you to present your brand as being cutting edge and powerful. They are popular for VIP cards especially when made in a thicker metal. Our cards are made from 100% brass that will not tarnish over time.



BUSINESS CARDS

QUANTITY	0.3 MM	0.4 / 0.5 / 0.6 / 0.8 MM
200	US\$ 829	US\$ 959
300	US\$ 1,149	US\$ 1,379
400	US\$ 1,499	US\$ 1,819
500	US\$ 1,539	US\$ 2,119
1000	US\$ 2,749	US\$ 3,969

MEMBER CARDS

QUANTITY	0.3 MM	0.4 / 0.5 / 0.6 / 0.8 MM
200	US\$ 919	US\$ 1,059
300	US\$ 1,269	US\$ 1,519
400	US\$ 1,649	US\$ 1,999
500	US\$ 1,699	US\$ 2,339
1000	US\$ 3,029	US\$ 4,369

CLOSE-UP DETAIL



CARD THICKNESSES

0.3 MM	_____
0.4 MM	_____
0.5 MM	_____
0.6 MM	_____
0.8 MM	_____

COPPER CARDS

COPPER MIRROR CARDS

This copper card is treated with a mirror finish to make it highly reflective. Cards cut or etched in copper create a natural old-world appeal of the metal, with contemporary values. Our pure copper does not oxidize and will maintain their color for ten years. We recommend etching the surface rather than using color to showcase the natural qualities of the metal.



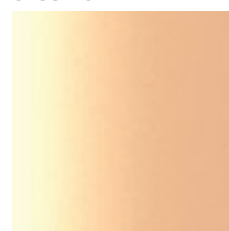
BUSINESS CARDS

QUANTITY	0.3 MM	0.4 / 0.5 / 0.6 / 0.8 MM
200	US\$ 829	US\$ 1,219
300	US\$ 1,139	US\$ 1,759
400	US\$ 1,499	US\$ 2,259
500	US\$ 1,779	US\$ 2,789
1000	US\$ 3,479	US\$ 5,359

MEMBER CARDS

QUANTITY	0.3 MM	0.4 / 0.5 / 0.6 / 0.8 MM
200	N/A	N/A
300	N/A	N/A
400	N/A	N/A
500	N/A	N/A
1000	N/A	N/A

CLOSE-UP DETAIL



CARD THICKNESSES

0.3 MM	_____
0.4 MM	_____
0.5 MM	_____
0.6 MM	_____
0.8 MM	_____

COPPER PRISM CARDS

This copper card with a prism finish is a great option to mask the impact of fingerprints on your cards. This finish is ideal for member cards which require regular usage.



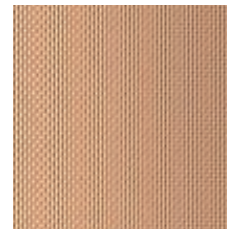
BUSINESS CARDS

QUANTITY	0.3 MM	0.4 / 0.5 / 0.6 / 0.8 MM
200	US\$ 839	US\$ 1,279
300	US\$ 1,149	US\$ 1,779
400	US\$ 1,499	US\$ 2,359
500	US\$ 1,769	US\$ 2,919
1000	US\$ 3,459	US\$ 5,759

MEMBER CARDS

QUANTITY	0.3 MM	0.4 / 0.5 / 0.6 / 0.8 MM
200	US\$ 929	US\$ 1,409
300	US\$ 1,269	US\$ 1,959
400	US\$ 1,649	US\$ 2,599
500	US\$ 1,949	US\$ 3,219
1000	US\$ 3,809	US\$ 6,339

CLOSE-UP DETAIL



CARD THICKNESSES

0.3 MM	_____
0.4 MM	_____
0.5 MM	_____
0.6 MM	_____
0.8 MM	_____

COPPER FROSTED CARDS

Cards with a frosted finish, together with the prism finish are ideal for use as membership cards. This finish will mask the impact of fingerprints on the card compared to the mirror card finish.



BUSINESS CARDS

QUANTITY	0.3 MM	0.4 / 0.5 / 0.6 / 0.8 MM
200	US\$ 839	US\$ 1,279
300	US\$ 1,149	US\$ 1,779
400	US\$ 1,499	US\$ 2,359
500	US\$ 1,769	US\$ 2,919
1000	US\$ 3,459	US\$ 5,759

MEMBER CARDS

QUANTITY	0.3 MM	0.4 / 0.5 / 0.6 / 0.8 MM
200	US\$ 929	US\$ 1,409
300	US\$ 1,269	US\$ 1,959
400	US\$ 1,649	US\$ 2,599
500	US\$ 1,949	US\$ 3,219
1000	US\$ 3,809	US\$ 6,339

CLOSE-UP DETAIL



CARD THICKNESSES

0.3 MM	_____
0.4 MM	_____
0.5 MM	_____
0.6 MM	_____
0.8 MM	_____

MATT BLACK COPPER CARDS

Matt black copper is one of our newest finishes. Our matt black copper card is anodized so the whole card has a matt finish. Matt black copper cards look great when laser etched detailing of your design on this unique metal card to show the copper itself.



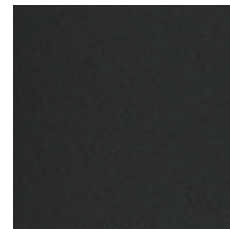
BUSINESS CARDS

QUANTITY	0.3 MM	0.4 / 0.5 / 0.6 / 0.8 MM
200	US\$ 829	US\$ 1,359
300	US\$ 1,139	US\$ 1,879
400	US\$ 1,489	US\$ 2,489
500	US\$ 1,709	US\$ 3,069
1000	US\$ 3,019	US\$ 5,479

MEMBER CARDS

QUANTITY	0.3 MM	0.4 / 0.5 / 0.6 / 0.8 MM
200	US\$ 919	US\$ 1,499
300	US\$ 1,259	US\$ 2,069
400	US\$ 1,639	US\$ 2,739
500	US\$ 1,879	US\$ 3,379
1000	US\$ 3,329	US\$ 6,029

CLOSE-UP DETAIL



CARD THICKNESSES

0.3 MM	_____
0.4 MM	_____
0.5 MM	_____
0.6 MM	_____
0.8 MM	_____

COPPER BRUSHED CARDS

Cards cut or etched in copper create a natural old-world appeal of the metal, with contemporary values. The brushed finish is better for masking finger print marks on this card. Our pure copper does not oxidize and will maintain their color for ten years. We recommend etching the surface rather than using color to showcase the natural qualities of the metal.



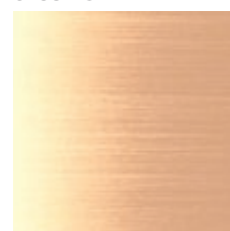
BUSINESS CARDS

QUANTITY	0.3 MM	0.4 / 0.5 / 0.6 / 0.8 MM
200	US\$ 889	US\$ 1,299
300	US\$ 1,219	US\$ 1,899
400	US\$ 1,589	US\$ 2,389
500	US\$ 1,879	US\$ 2,959
1000	US\$ 3,659	US\$ 5,819

MEMBER CARDS

QUANTITY	0.3 MM	0.4 / 0.5 / 0.6 / 0.8 MM
200	US\$ 979	US\$ 1,429
300	US\$ 1,349	US\$ 2,089
400	US\$ 1,749	US\$ 2,629
500	US\$ 2,059	US\$ 3,259
1000	US\$ 4,029	US\$ 6,409

CLOSE-UP DETAIL



CARD THICKNESSES

0.3 MM	_____
0.4 MM	_____
0.5 MM	_____
0.6 MM	_____
0.8 MM	_____

COPPER CONTOUR CARDS

Business cards cut or etched in genuine copper create a natural old-world appeal of the metal, with contemporary values. Our copper contour cards have a distinctive grooved finish that is quite unique.



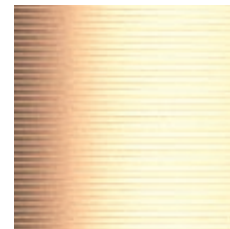
BUSINESS CARDS

QUANTITY	0.3 MM	0.4 / 0.5 / 0.6 / 0.8 MM
200	US\$ 919	US\$ 1,349
300	US\$ 1,259	US\$ 1,889
400	US\$ 1,649	US\$ 2,509
500	US\$ 1,959	US\$ 3,099
1000	US\$ 3,659	US\$ 5,829

MEMBER CARDS

QUANTITY	0.3 MM	0.4 / 0.5 / 0.6 / 0.8 MM
200	US\$ 1,019	US\$ 1,489
300	US\$ 1,389	US\$ 2,079
400	US\$ 1,819	US\$ 2,769
500	US\$ 2,159	US\$ 3,409
1000	US\$ 4,029	US\$ 6,419

CLOSE-UP DETAIL



CARD THICKNESSES

0.3 MM	_____
0.4 MM	_____
0.5 MM	_____
0.6 MM	_____
0.8 MM	_____

MATT BLACK CONTOUR COPPER CARDS

Matt black contour copper business cards will set you apart. The contour or microscopic groove within the surface of the metal cards makes these a memorable business card. The contour effect is not as noticeable on this matt black copper card finish as can be seen on our matt black brushed stainless steel cards. The contour effect is a great way to mask finger print markets on metal cards.



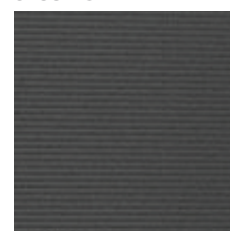
BUSINESS CARDS

QUANTITY	0.3 MM	0.4 / 0.5 / 0.6 / 0.8 MM
200	US\$ 1,069	US\$ 1,299
300	US\$ 1,499	US\$ 1,799
400	US\$ 1,969	US\$ 2,389
500	US\$ 2,359	US\$ 2,949
1000	US\$ 4,369	US\$ 5,469

MEMBER CARDS

QUANTITY	0.3 MM	0.4 / 0.5 / 0.6 / 0.8 MM
200	US\$ 1,179	US\$ 1,429
300	US\$ 1,649	US\$ 1,979
400	US\$ 2,169	US\$ 2,629
500	US\$ 2,599	US\$ 3,249
1000	US\$ 4,809	US\$ 6,019

CLOSE-UP DETAIL



CARD THICKNESSES

0.3 MM	_____
0.4 MM	_____
0.5 MM	_____
0.6 MM	_____
0.8 MM	_____



TITANIUM CARDS

BRUSHED TITANIUM

In addition to our standard titanium card, we offer this brushed titanium card finish. Titanium cards make an impression no other metal business card ever could. Each card is created from genuine titanium and polished and brushed by hand for a unique card finish.



BUSINESS CARDS

QUANTITY	0.8 MM
100	US\$ 1,299
200	US\$ 1,839
300	US\$ 2,579
400	US\$ 3,239
500	US\$ 3,789
1000	US\$ 6,649

MEMBER CARDS

QUANTITY	0.8 MM
100	US\$ 1,429
200	US\$ 2,029
300	US\$ 2,839
400	US\$ 3,569
500	US\$ 4,169
1000	US\$ 7,319

CLOSE-UP DETAIL



CARD THICKNESSES

0.8 MM

MATT BLACK TITANIUM

Titanium is renowned for its great strength, corrosion resistance and being lightweight. Our genuine titanium matt black metal business and member cards set you apart from the competition.



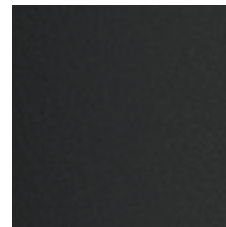
BUSINESS CARDS

QUANTITY	0.8 MM
100	US\$ 1,399
200	US\$ 1,999
300	US\$ 2,849
400	US\$ 3,599
500	US\$ 4,249
1000	US\$ 7,499

MEMBER CARDS

QUANTITY	0.8 MM
100	US\$ 1,539
200	US\$ 2,199
300	US\$ 3,139
400	US\$ 3,959
500	US\$ 4,679
1000	US\$ 8,249

CLOSE-UP DETAIL



CARD THICKNESSES

0.8 MM



WHITE TITANIUM

In addition to our brushed and matt black titanium cards, we offer this white titanium card finish. Titanium cards make an impression no other metal business card ever could. Each card is created from genuine titanium and silkscreen printed in white. The card edge will reveal the metal.



BUSINESS CARDS

QUANTITY	0.8 MM
100	US\$ 1,249
200	US\$ 1,719
300	US\$ 2,399
400	US\$ 2,999
500	US\$ 3,499
1000	US\$ 6,089

MEMBER CARDS

QUANTITY	0.8 MM
100	US\$ 1,379
200	US\$ 1,899
300	US\$ 2,639
400	US\$ 3,299
500	US\$ 3,849
1000	US\$ 6,699

CLOSE-UP DETAIL



CARD THICKNESSES

0.8 MM



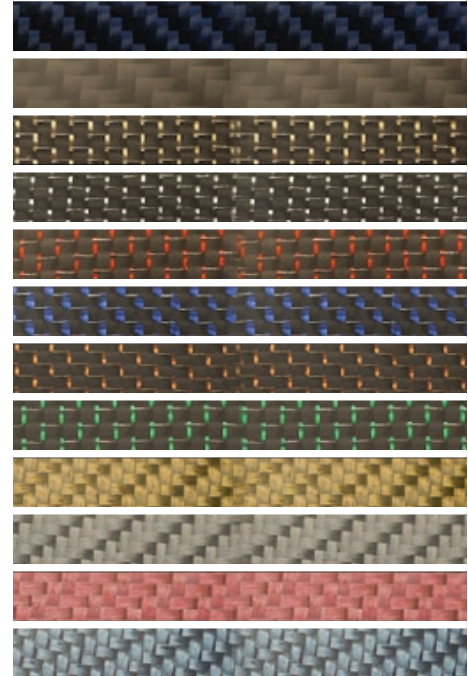
- Prices are quoted in US dollars.
- Shipping costs are included in all prices.
- Member card refers to all cards that require personalization.

CARBON FIBER CARDS

Our carbon fiber and glass fiber cards are truly unique. Carbon fiber business cards reflect individuality and authority on their holder. They speak of precision, design, and craftsmanship. Carbon fiber business and member cards are only available in 0.8mm/0.03" (credit) card thickness. Cards can be silk screen printed on one or both sides. We can print in full color and add member names and/or numbers too. We offer either a gloss or matte lacquer finish. These exquisite cards take 2 weeks to manufacture.

FINISHES:

CARBON FIBER	3K Twill carbon fiber gloss
CARBON FIBER	3K Twill carbon fiber matt
CARBON FIBER/GOLD LINE	3K Plain Gold line carbon fiber
CARBON FIBER/SILVER LINE	3K Plain Silver line carbon fiber
CARBON FIBER/RED LINE	3K Plain Red line carbon fiber
CARBON FIBER/BLUE LINE	3K Plain Blue line carbon fiber
CARBON FIBER/ORANGE LINE	3K Plain Orange line carbon fiber
CARBON FIBER/GREEN LINE	3K Plain Green line carbon fiber
GLASS FIBER/GOLD	3K Twill Gold glass fiber
GLASS FIBER/SILVER	3K Twill Silver glass fiber
GLASS FIBER/RED	3K Twill Red glass fiber
GLASS FIBER/BLUE	3K Twill Blue glass fiber



GLOSS CARBON FIBER CARDS

Carbon fiber is exactly what the name suggests extremely thin strong fibers. Our cards are made from genuine carbon fiber with a premium 3K-twill weave. Our gloss card finish is available in 0.8mm/0.03" (credit) card thickness.



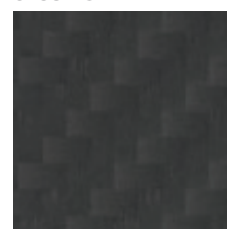
BUSINESS CARDS

QUANTITY	0.8 MM
100	US\$ 849
200	US\$ 999
300	US\$ 1,449
400	US\$ 1,889
500	US\$ 2,099
1000	US\$ 3,979

MEMBER CARDS

QUANTITY	0.8 MM
100	N/A
200	N/A
300	N/A
400	N/A
500	N/A
1000	N/A

CLOSE-UP DETAIL



CARD THICKNESSES

0.8 MM 

MATT CARBON FIBER CARDS

Carbon fiber is exactly what the name suggests extremely thin strong fibers. Our cards are made from genuine carbon fiber with a premium 3K-twill weave. Our matt card finish is available in 0.8mm/0.03" (credit) card thickness.



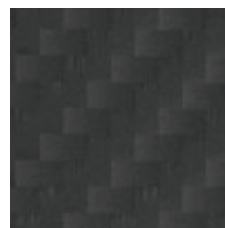
BUSINESS CARDS

QUANTITY	0.8 MM
100	US\$ 849
200	US\$ 999
300	US\$ 1,449
400	US\$ 1,889
500	US\$ 2,099
1000	US\$ 3,979

MEMBER CARDS

QUANTITY	0.8 MM
100	N/A
200	N/A
300	N/A
400	N/A
500	N/A
1000	N/A

CLOSE-UP DETAIL



CARD THICKNESSES

0.8 MM



CARBON FIBER LUGGAGE TAGS

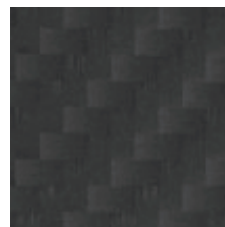
Our carbon fiber luggage tags are rugged and hard wearing. These 1.2mm card thickness cards are available with either a leather strap or a wire mesh strap. Cards can be silk screen printed on one or both sides. We offer either a gloss or matte lacquer finish. These exquisite cards take 2 weeks to manufacture.



CARBON FIBER LUGGAGE TAGS

QUANTITY	1.2 MM
100	US\$ 899
200	US\$ 1,399
300	US\$ 1,949
400	US\$ 2,339
500	US\$ 2,649
1000	US\$ 4,999

CLOSE-UP DETAIL



CARD THICKNESSES

1.2 MM





PRECIOUS METAL CARDS

GOLD CARDS

Handing out a solid gold card is an introductory statement like no other. Whatever the circumstances, and whomever the individual you're presenting yourself to, a gold business card is sure to make a mark. Join the elite few. The cloistered cadre of gold card bearers.

We can provide gold in the following qualities:

- **YELLOW GOLD - 22 KT, 18 KT, 14 KT AND 9 KT**
- **WHITE GOLD - 18 KT AND 14 KT**
- **PINK GOLD - 18 KT**

Our higher purity cards made with 22kt or 18kt gold are stamped 22kt or 18kt on the rear side.



GOLD

QUANTITY	22 kt	18 kt	14 kt	9 kt
1	US\$ 3,300	US\$ 2,600	US\$ 2,000	US\$ 1,200
2	US\$ 6,600	US\$ 5,200	US\$ 4,000	US\$ 2,400
3	US\$ 9,900	US\$ 7,800	US\$ 6,000	US\$ 3,600
4	US\$ 13,200	US\$ 10,400	US\$ 8,000	US\$ 4,800
5	US\$ 16,500	US\$ 13,000	US\$ 10,000	US\$ 6,000
10	US\$ 32,000	US\$ 25,000	US\$ 19,000	US\$ 11,000

CLOSE-UP DETAIL



CARD THICKNESSES

0.5 MM

- Prices are quoted in US dollars.
- Shipping costs are included in all prices.
- Prices are subject to change due to live metal spot prices.

PLATINUM CARDS

Our platinum business and membership cards are made from pure platinum (950). They feature a brushed finish and the card size is 85.6mm x 54.0mm x 0.8mm card thickness. Our member cards can include a laser etched name and number and a HiCo magnetic strip if required.



PLATINUM (950)

QUANTITY	0.8 MM
1	US\$ 5,000
2	US\$ 9,750
3	US\$ 14,500
4	US\$ 19,250
5	US\$ 21,000
10	US\$ 39,000

CLOSE-UP DETAIL



CARD THICKNESSES

0.8 MM

- Prices are quoted in US dollars.
- Shipping costs are included in all prices.
- Prices are subject to change due to live metal spot prices.

STERLING SILVER CARDS

Our sterling silver business cards are plated with rhodium for a bright, shiny finish. They can also be gold plated or pink gold plated. Our cards are made with sterling silver and stamped '925' on the rear side.



STERLING SILVER

QUANTITY	0.5 MM
1	US\$ 500
2	US\$ 1,000
3	US\$ 1,500
4	US\$ 2,000
5	US\$ 2,500
10	US\$ 4,500

CLOSE-UP DETAIL



CARD THICKNESSES

0.5 MM

- Prices are quoted in US dollars.
- Shipping costs are included in all prices.
- Prices are subject to change due to live metal spot prices.

METAL GIFT CARDS: NIKE

The Nike metal gift card has a value of **US US\$150** and is redeemable for merchandise online at Nike.com, Hurley.com, Converse.com and Nike-owned and Converse owned retail locations in the United States and Puerto Rico or by phone. A number of different designs and card finishes were tested as samples initially. The approved card was made from hi grade stainless steel with our silver prism finish in **0.6MM/0.024"** card thickness.

The card features the iconic swoosh logo in white on the front of the card. The rear features a unique 19-digit card number as well as a 9 digits bar code (type 128). Each card had the unique number and PIN laser etched to the card. The six-digit PIN number was then hidden with a silkscreen printed layer of ink. Over 20,000 cards were dispatched to over 170 U.S stores nationwide in the run up to the Thanksgiving holidays in 2016. Each store had a card and cardboard packaging in the shape of a Nike shoebox for promotional purposes as well as a stock of the metal gift cards.

The Nike metal gift card was entered by Pure Metal Cards into the 2017 Elan Awards for Card Manufacturing Excellence organized by the International Card Manufacturers Association (ICMA), a global trade association for card manufacturers, personalizers, issuers and suppliers. The design was the first finalist in the Loyalty, Promotional and Gift Cards category. Each year, the prestigious ICMA Elan Awards casts a spotlight on the best of the best in the global card industry, honoring world-class achievements in both card design and technological innovation. Widely acknowledged as the most recognized award platform, the Elan Award is the Oscar's equivalent for card development excellence. 1% of the Nike gift card sales helps support Marathon Kids Running Clubs in the U.S. - Learn more at: www.nike.com/marathonkids

FOR MORE INFORMATION ABOUT 2017 ICMA ELAN AWARD - LEARN MORE AT: www.icma.com/initiatives/elan-awards



The Nike metal gift card was also recognized at the 2017 Premier Print Awards of the Printing Industries of America Award Of Recognition Winners. The Premier Print Awards Competition recognizes the highest quality printed pieces in various categories from around the world. Each year, only the most worthy pieces receive Awards of Recognition and Certificates of Merit. excellence in the printing industry. For more than sixty years, winners of the largest, most prestigious print competition in the world have leveraged this honor to gain a competitive advantage. For more information about 2017 Premier Print Awards - learn more at: www.printing.org/programs/awards/premier-print-awards/2017-award-of-recognition-winners





METAL CARD SPECIFICATIONS

We can produce your metal business cards or membership cards in any size required. Do consider how your member will store the card though. We generally recommend you use the standard card sizes:

- **85 mm x 54 mm (3.3" x 2.2")**
- **89 mm x 51 mm (3.5" x 2.0") USA and Canada sizes**

We suggest that we make your card slightly smaller than a credit card 85.60mm × 53.98mm (3.37" × 2.13") to enable it to be easily inserted or removed from a wallet or purse.

DIMENSIONS:

- **85 mm x 54 mm (3.3" x 2.1")**
- **89 mm x 51 mm (3.5" x 2.0")**
- **Or customizable**

THICKNESS:

- **0.3 mm, 300 micron (0.0012")**
- **0.4 mm, 400 micron (0.0157")**
- **0.5 mm, 500 micron (0.0197")**

- **0.6 mm, 600 micron (0.0236")**
- **0.8 mm, 800 micron (0.0315")**
- **1.0 mm, 1,000 micron (0.0394")***

* Prices available upon request

EFFECTS:

- **Personalization (name, number, date)**
- **Magnetic stripe**
- **Smart chip**
- **QR code, barcode**
- **Unique pin and scratch panel**

- **1 to 4 colors for text**
- **1 color (full side)**
- **Full colors (offset printing)**
- **Laser etch only (no color)**
- **Etch with 1-4 color**

- **Debossed text**
- **Cut thru**
- **Swarovski crystals**
- **Corner radius: customizable**

Your cards are shipped in a premium quality high gloss black wood presentation case with a separate cardboard storage box. Each metal card is also individually wrapped in a transparent plastic sleeve. We also offer a range of customized packaging options, which you may refer to page 27 for detailed information.



PERSONALIZING YOUR MEMBERSHIP CARDS

All the cards shown above can also be made as a membership card or loyalty card. The image of your organization or business is presented to the public in a variety of ways not the least of which is your membership card. Not only does a VIP card need to be durable but also, it needs to represent the quality and vision of your organization. Since any membership card program needs to work alongside existing marketing and branding efforts, the look and feel of the card is vital. The card must reflect the proper image and capture the essence of your brand. For high-end goods and services companies, using a plastic card is no longer the best option and can detract from your brand image. The way forward is with a Pure Metal Cards metal membership cards made in stainless steel or brass (gold). We can create membership cards for:

- **Privilege and loyalty programs**
- **Hotels and resorts**
- **Golf clubs**
- **Fitness and leisure centers**
- **Private member clubs**
- **Night clubs**
- **Societies**
- **Restaurants**
- **Casino's**
- **Organizations**
- **Social clubs**
- **Complimentary (comp) programs**

Our membership cards are custom made based on your existing design or we offer a free design service to create that distinctive metal card members will cherish and be proud to show off. We can include member names and member numbers on each individual card. We can also punch membership numbers to create the same look as with a typical credit card. Pure Metal Cards can tailor your member card to meet your specific needs including:

- **Individual names (etched, embossed, punched or printed)**
- **Sequential numbering (etched, embossed, punched or printed)**
- **Magnetic stripe (high-coercivity (hico) or low-coercivity (loco))**
- **Bar code stripe**
- **Signature panel**
- **Crystal or jewel**
- **QR code**
- **Scratch off panel**
- **Hologram**
- **Photo**
- **NFC/RFID chip**
- **Smart chip (FM4442, FM4428, SLE4442, SLE4428, SLE5542, LSE5528, Atmel etc.)**

To work with your existing CRM software we can include a barcode, QR code, magnetic stripe or a smart chip.

METAL GIFT CARDS: THE CULTIVIST

The Cultivist offers its members bespoke access to the art world wherever they happen to be. With their metal membership card, members are able to skip the line at hundreds of museums and galleries worldwide, including the Tate, MoMA, the Met, the Guggenheim and the Uffizi, and gain privileged access to all key global art fairs. With 24 hours' notice, the team will tailor an art tour in a destination of your choice, including arranging private tours at museums at no extra expense. There are invitations to members-only events, curator-led first look exhibition viewings and artist studio visits.

The Cultivist co-founders Marlies Verhoeven (who heads up the New York office) and London-based Daisy Peat worked together for six years at Sotheby's, running the auction house's VIP programme, Sotheby's Preferred. With angel investor backing they drew on their international network of artists, museum professionals and collectors, and launched The Cultivist.

The membership card is made from hi grade standard stainless steel in 0.5mm/0.02" card thickness and features the logo and a paintbrush strip etched into the surface. The rear side features each member's details laser etched onto the card and a photograph of themselves. Initial founding members enjoyed a unique portrait drawn by London-based artist Miranda Donovan. The cards are dispatched to clients every two weeks from the operational hubs in America and Europe.

For further details of The Cultivist, the world's only global arts club offering uniquely privileged access to every aspect of the art world please visit: www.thecultivist.com



METAL NFC/RFID CARDS

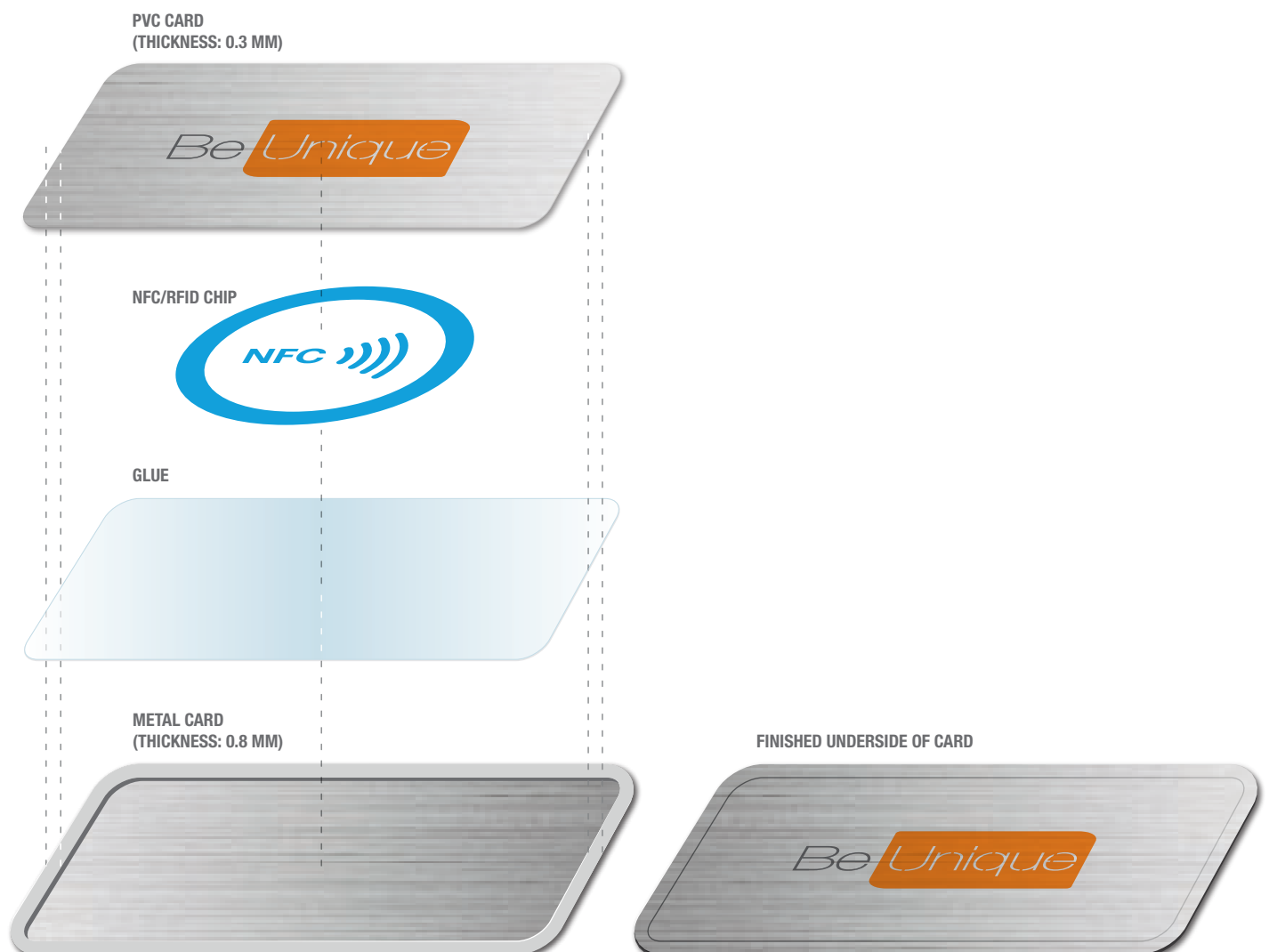
Pure Metal Cards offers a range of metal cards with an NFC/RFID embedded chip. These cards enable your cardholder to get connected. We combine a metal card, NFC/RFID chip, and a PVC card.

Radio frequency identification (RFID) is an established technology. Today an advanced use of this technology is called near-field communication (NFC) and is becoming predominant. RFID is a one-way process. Information is transmitted from an encoded memory chip (known as a "smart tag") via an antenna to an RFID reader. These passive RFID tags have no power. They're activated by an electromagnetic signal sent from the RFID reader. The signal doesn't travel as far as active RFID, so they're used for short read ranges. NFC is based on RFID protocols. The devices run at passive RFID's high frequency. NFC reads smart tags because, like RFID, it features a read/write operation mode.

But NFC goes further than RFID. The technology has two-way communication - unlike RFID's one-directional limitation - using one of two modes: card emulation and peer-to-peer (P2P). For example, current smartphones are NFC enabled and can pass information back and forth to another NFC device. Contactless payment is an example of card emulation mode. Any time you redeem rewards points via your phone, you're also using NFC's card emulation feature. P2P comes into play when you "bump" your mobile device with another one to share information. Maybe you're passing music back and forth, swapping special deals, or playing a game with the friend sitting next to you. You can even tap your device with a router, to get on that network without having to use a password.

NFC will soon likely replace QR codes in some adverts and marketing promotional materials. Consumers will no longer have to scan a QR code to get to the intended location, but can simply use the NFC mode to instantly get the information that the advertiser wants them to have.

Our metal NFC/RFID cards are 0.8mm card thickness and available in any stainless steel, brass, copper or titanium card finish.



PURE IDENTITY CARDS & NFC/RFID CARDS

Pure Metal Cards leads the industry in developing new and unique metal cards. Our pure metal identity cards enable your ID cards to really make their mark with the cardholder. These pure identity cards are available in any of our metals and card finishes to create a simply stunning identity card.

We use either an all-metal card or a combination metal and PVC card, depending on your requirements. We can add the following features to our identity cards:

- **Color photo**
- **Cardholder name, number, date etc.**
- **Cardholder signature**
- **Qr code**
- **Barcode**
- **HiCo/LoCo Magnetic strip**
- **Hologram**
- **Smartchip**
- **NFC/RFID chip**

To add functionality to your ID card we can incorporate an NFC/RFID chip into the card body using a PVC card. The NFC chip is programmable using a iPhone, Android device or dedicated card reader/writer. The chip itself is hidden within the PVC card. The chip can only be read from the PVC side, so the metal card acts like a shield.

By adding an NFC chip to your pure identity cards you can set up digital trigger actions when the card is in near contact to other NFC enabled devices. You can program the card to access security features like door or room access, link to your website or other promotional activities. Almost all modern smart phone are NFC enabled these days.

Pure Metal Cards provides premium quality metal + PVC cards available in either a matte or gloss finish. These cards are in 1.2mm (0.05") card thickness. These can be added to our metal cards in which are available in stainless steel, brass or copper. We can offer these in all our various card finishes too.

Note: To create our pure ID cards we are combining a metal card and PVC card together. Both cards are stuck together by hand so there will be ± 0.5 mm difference between each card edge.



BOTTLE OPENER - MATT BLACK STAINLESS STEEL

Using metal bottle opener business cards is another great way to make an impact and keep your brand top of mind with your audience. Cards can be made any size. These durable 0.15mm (0.06") card thickness metal openers are also available with a key-ring attachment if required. For brewers and beer makers we can also custom shapes of our metal bottle opener business cards to match your branding. Cards can also be personalized with a venue location, address or other contact information.



BUSINESS CARDS

QUANTITY	1.5 MM
200	US\$ 1,149
300	US\$ 1,689
400	US\$ 2,199
500	US\$ 2,619
1000	US\$ 4,969

MEMBER CARDS

QUANTITY	1.5 MM
200	US\$ 1,269
300	US\$ 1,859
400	US\$ 2,419
500	US\$ 2,889
1000	US\$ 5,469

CLOSE-UP DETAIL



CARD THICKNESSES

1.5 MM

- Prices are quoted in US dollars.
- Shipping costs are included in all prices.
- Member card refers to all cards that require personalization.

BOTTLE OPENER - BRUSHED STAINLESS STEEL



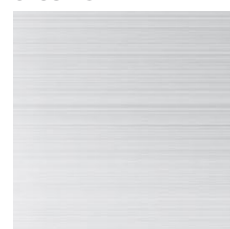
BUSINESS CARDS

QUANTITY	1.5 MM
200	US\$ 1,189
300	US\$ 1,749
400	US\$ 2,279
500	US\$ 2,709
1000	US\$ 5,149

MEMBER CARDS

QUANTITY	1.5 MM
200	US\$ 1,309
300	US\$ 1,929
400	US\$ 2,509
500	US\$ 2,989
1000	US\$ 5,669

CLOSE-UP DETAIL



CARD THICKNESSES

1.5 MM

- Prices are quoted in US dollars.
- Shipping costs are included in all prices.
- Member card refers to all cards that require personalization.

CUSTOM SHAPED CARDS

HANG TAGS & PRICE TAGS

Product hang tags create an immediate call to action right at the point of sale. They are used to attract a consumer's attention to your product and promote your brand.

Examples of ways to use hang tags including instant coupon savings, QR codes, providing additional product information, contests, website promotion, giveaways, event promotions and entry forms.



LUGGAGE TAGS

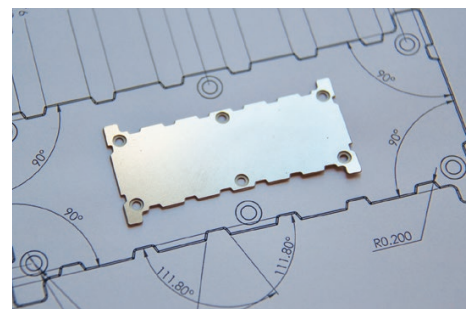
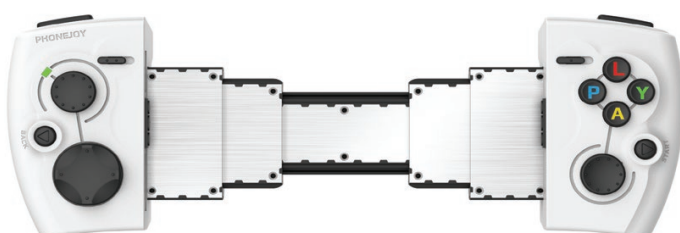
Our stylish metal luggage tags or baggage tags can be laser engraved with your brand or logo. These robust tags are ideal for quality luggage, laptop bags, sports & music cases.

Pure Metal Cards metal luggage tags are tough and durable. They are ideal for the frequent traveler or as a corporate gift. These are also available in carbon fiber. See page 25 for further details.



PRECISION ENGINEERING

Pure Metal Cards can create custom designed and precision-engineered parts and components made in stainless steel or brass. Please contact us for a quotation.



PACKAGING

LUXURY PRESENTATION CASE



QUANTITY

100	US\$ 13,750
200	US\$ 26,300
300	US\$ 38,200
400	US\$ 49,700
500	US\$ 60,650
1000	US\$ 111,500

- Subject to stock availability.
- Prices are quoted in US dollars.
- Cases are blank without logo or lettering.
- Customized cases require a minimum order of 200 cases.
- Customized inlay tray to hold, 1 or 2 cards and/or a card brochure.
- 1 or 2 inlay trays available.
- Case inside is faux leather. Suede and real leather are also available as options.
- Additional fees for shipping may apply based on your location.
- Prices subject to change.

WOOD PRESENTATION CASE



QUANTITY

100	US\$ 2,199
200	US\$ 3,199
300	US\$ 4,699
400	US\$ 5,699
500	US\$ 6,299
1000	US\$ 11,349

- Subject to stock availability.
- Prices are quoted in US dollars.
- Cases are blank without logo or lettering.
- Customized cases require a minimum order of 1,000 cases.
- Additional fees for shipping may apply based on your location.
- Prices subject to change.

CARDBOARD PRESENTATION CASE



QUANTITY

500	US\$ 4,000
1000	US\$ 7,500

- Subject to stock availability.
- Prices are quoted in US dollars.
- Cases are blank without logo or lettering.
- Customized cases require a minimum order of 1,000 cases.
- Additional fees for shipping may apply based on your location.
- Prices subject to change.

PACKAGING

CARDHOLDER & SLEEVE



QUANTITY

500	US\$ 2,549
1000	US\$ 3,749

- Prices are quoted in US dollars.
- Shipping costs are included in all prices.

LUXURY CARD SLEEVES



QUANTITY

500	US\$ 1,000
1000	US\$ 1,300

- Prices are quoted in US dollars.
- Shipping costs are included in all prices.

CARD ENVELOPES

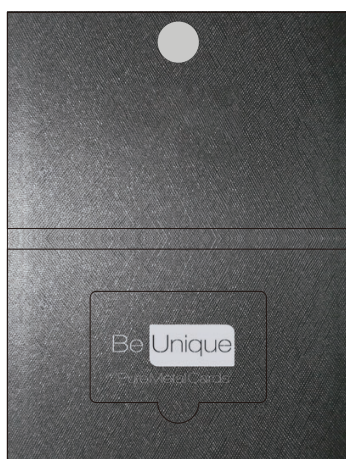


QUANTITY

500	US\$ 1,250
1000	US\$ 1,500

- Prices are quoted in US dollars.
- Shipping costs are included in all prices.

BLACK FOLD CARDBOARD SINGLE CARDHOLDER



QUANTITY

100	US\$ 650
200	US\$ 900
300	US\$ 1,100
400	US\$ 1,450
500	US\$ 1,500
1000	US\$ 2,750

- Prices are quoted in US dollars.
- Shipping costs are included in all prices.

PACKAGING

WIRE MESH STRAPS

- Available for purchase with cards or tags only
- Length: 5.9"/150mm
- Available in steel, gold or black colors



QUANTITY

100	US\$ 85
200	US\$ 170
300	US\$ 250
400	US\$ 335
500	US\$ 400
1000	US\$ 700

- Subject to stock availability.
- Prices are quoted in US dollars.
- Cases are blank without logo or lettering.
- Customized cases require a minimum order of 1,000 cases.
- Additional fees for shipping may apply based on your location.
- Prices subject to change.

LEATHER STRAPS

- Available for purchase with cards or tags only
- Length: 6.3"/160mm
- Available in black or tan colors



QUANTITY

100	US\$ 150
200	US\$ 300
300	US\$ 450
400	US\$ 600
500	US\$ 700
1000	US\$ 1,275

- Subject to stock availability.
- Prices are quoted in US dollars.
- Cases are blank without logo or lettering.
- Customized cases require a minimum order of 1,000 cases.
- Additional fees for shipping may apply based on your location.
- Prices subject to change.

SHIPPING DETAILS

Your order is shipped by express courier, typically DHL or FedEx. We will provide you with a shipment tracking number as soon as your cards are dispatched. If you order a sample card we ship your design in our black cardboard presentation case. For main orders cards are shipping in a luxurious black oak presentation case with a spare card black cardboard storage case.

LEAD TIMES

CARD

Sample: 9-11 working days plus 2-3 days shipping.
Order: 11-13 working days plus 2-3 days shipping

Note: Orders over 200 cards may take longer to produce.

PACKAGING

Sample: 10-12 working days plus 2-3 days shipping.
Order: 40-45 working days plus 3-4 days shipping

CONTACT US

For more information please contact us.

USA _____ (+1) 415 670 9200
_____ (+1) 833 387 5900

Europe _____ (+31) 20 893 2244
_____ (+31) 62 608 8592

UK _____ +44 208 144 1950

Hong Kong _____ +852 8170 3535

Customer service: _____ info@PureMetalCards.com

Design service: _____ design@PureMetalCards.com

Skype: _____ Pure.Continental

A subsidiary of Pure Continental Ltd.
Pure Continental Ltd.
7/F Tung Yiu Commercial Building
31-A Wyndham Street, Central, Hong Kong

Be unique. Visit us at www.puremetalcards.com

Pure Metal Cards is a member of these organizations:



Be Unique

Pure Metal Cards®

© 2024 Pure Continental Ltd.